

OpenVPN on Windows 8 and 10

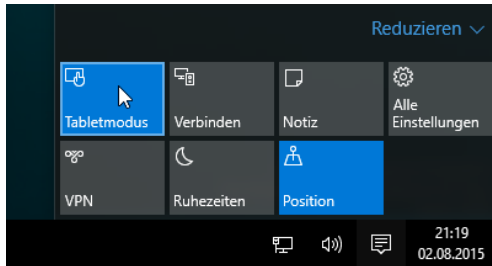
Revision: b'08. Januar 2020'

1 Foreword

- The OpenVPN client software works with Windows 8 and 10 and this manual has been tested with Windows 10 (64 Bit).
- Installation of the OpenVPN client software must be carried out by a user with administrator credentials on the local system.
- The installation requires working internet access, because files will be downloaded. Optionally, you can also obtain the installer elsewhere and bring it to the target computer, e.g. via USB stick.
- To establish an OpenVPN tunnel to the HU, you need network access, e.g. a connection to HU wifi or a DSL connection.
- If you have already installed OpenVPN and want to use the HU configuration in addition to existing configurations, you only need to download the configuration files "[hu-berlin.ovpn](#)" and "[hu-berlin Alternative.ovpn](#)" and put them into the OpenVPN configuration directory (usually C:\Programs\OpenVPN\config). After that, you should be able to use the HU configuration alongside your other OpenVPN configurations.

2 Preparations

If you are using a tablet, first disable tablet mode. If the instructions say "right click", you should keep tapping the icon until the context menu appears.



To disable tablet mode, tap the Info Center icon in the taskbar and then tap the appropriate button.

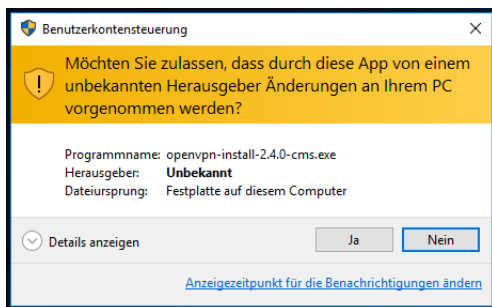
Depending on whether you use Microsoft Windows 10 or Windows 8, download the corresponding OpenVPN installer by clicking on the following link:

[OpenVPN-Installer-Windows 10](#)

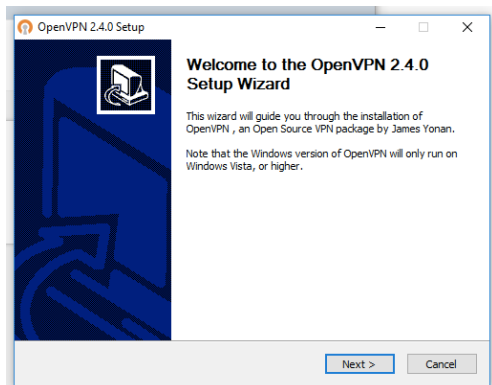
[OpenVPN-Installer-Windows 8](#)

3 Installation

The installation must be performed by a local user with administrator credentials (e.g. Administrator). You start the installation by double-clicking on the OpenVPN installer saved in the previous step.



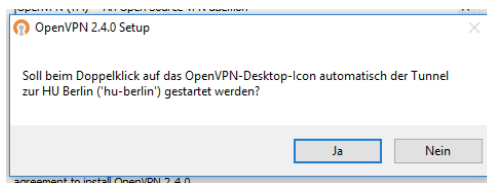
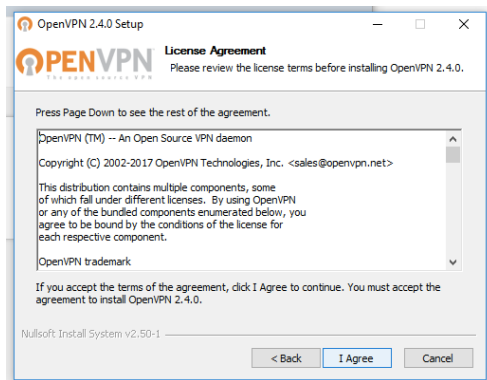
When starting the installer, you must confirm its execution by clicking Yes or Run.



Click Next.

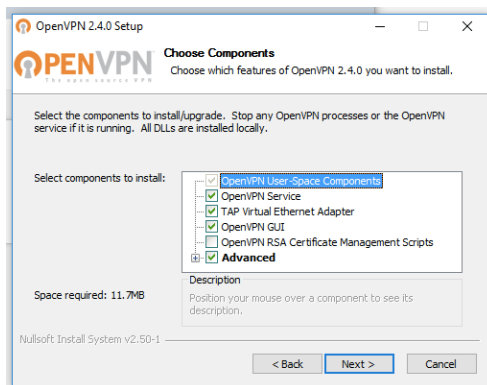
OpenVPN on Windows 8 and 10

After thorough reading of the license agreement you should agree to it. Click "I Agree".



In the following dialogue, you are asked whether you want to automatically establish a VPN connection to the HU when starting the OpenVPN Client. If you do not use any other VPN configurations besides the HU one, we recommend clicking Yes.

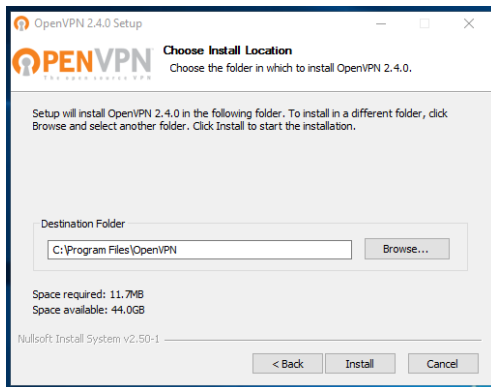
If you are using additional VPN configurations and only select the ones you want to use after starting the OpenVPN Client, click on No.



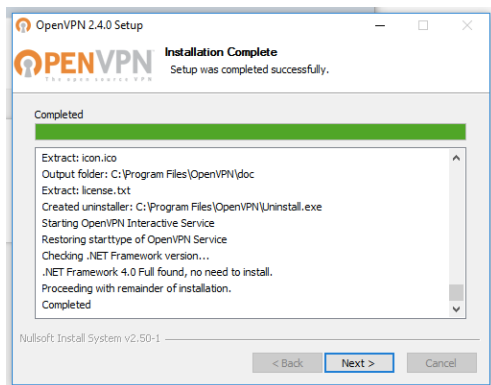
Click Next to agree to the component selection.

OpenVPN unter Windows 8 und 10

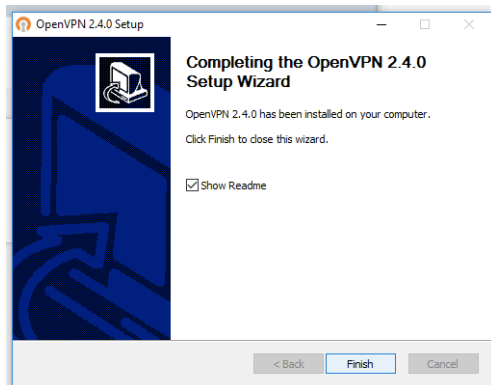
Start the installation by clicking on Install.



OpenVPN has now been installed on your computer. Click Next.

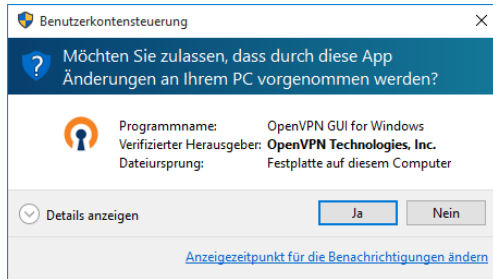


Exit the installer by clicking Finish.



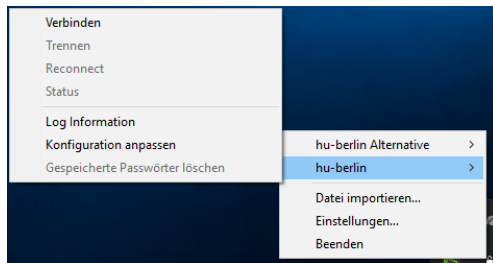
4 Establish OpenVPN Connection

Double-click on the "OpenVPN GUI" icon on the desktop.



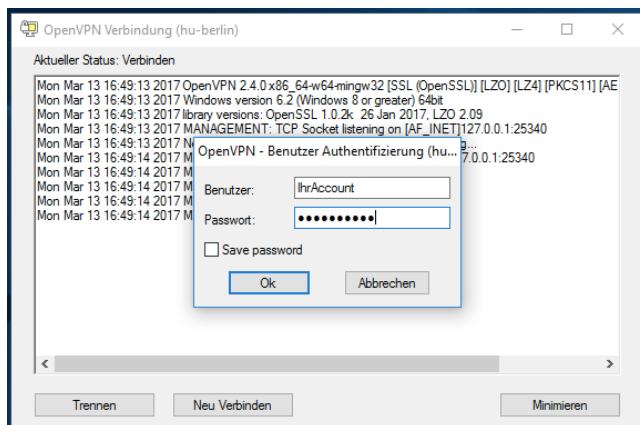
You may have to confirm the execution of the OpenVPN GUI with administrator rights at the first start by clicking Yes.

If you agreed during the installation to connect automatically after starting the OpenVPN GUI, skip the next step.



If you have rejected the automatically establishing a tunnel at startup, right click on the OpenVPN icon that just appeared in the task bar. Then click on hu-berlin.

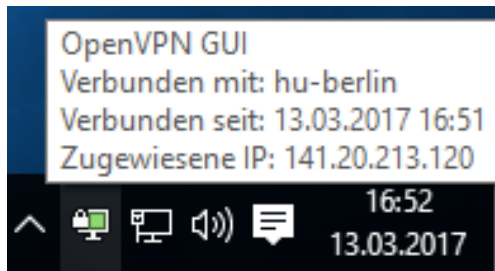
Then click on Connect in the sub-menu of the new window that appears.



- A window will now open with a login request.
- Login with username and password.

Depending on the institution providing your account, you may need to add an extension to your username. The extension can be found in the following table. If you do not know where you have your account, it is probably at CMS (central HU account).

Institution	Identifier
Computer- & Medienservice (CMS)	No Identifier
Informatik (Computer Science)	@informatik.hu-berlin.de
Mathematik (Mathematics)	@mathematik.hu-berlin.de
Physik (Physics)	@physik.hu-berlin.de



If the connection was established successfully, you will find a green OpenVPN symbol in the task bar with a corresponding success message.

5 Test OpenVPN Connection

Go to <https://meineip.hu-berlin.de>.

The IP address which the OpenVPN client reports directly after the connection is established should be displayed. It should also say "You are on the HU network!"

6 Split-Tunneling

For some users, it may make sense to send only traffic to the HU through the VPN tunnel - i.e. only packets addressed to 141.20.0.0/16. To realize this, the file hu-berlin.ovpn contains the two options

```
route-nopull
route 141.20.0.0 255.255.0.0
```

must be activated by removing the comment characters (;) (activate OpenVPN → Right click on OpenVPN symbol in the task bar → Edit Config)

7 VPN Problems

If you are encountering problems, try our alternative configuration hu-berlin-Alternative.ovpn in the OpenVPN client.